

High Pressure Volume Booster with Transmission Ratio, up to 310 bar

RH3-J

Description

Highly reliable high pressure volume booster with diaphragm and high flow. In addition, the booster features high sensitivity and excellent regulating characteristics.

Media

compressed air, non-corrosive gases or liquids

Supply pressure

max. 260 bar, optionally 345 bar or 310 bar

Test pressure

150% of maximum supply pressure according to regulations ANSI / ASME B31.3

Pilot pressure

see chart, pilot port G $\frac{3}{8}$ "

Leakage rate

< 1x 10⁻⁴ mbar l/s He

Air consumption

without constant bleed

Relieving function

non-relieving

Gauge port

not available, optionally 1/4" NPT at inlet and outlet

Mounting position

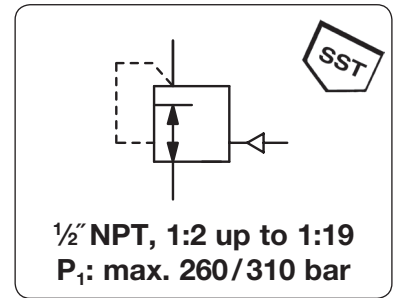
any

Temperature range

-25 °C to 100 °C / -13 °F to 212 °F

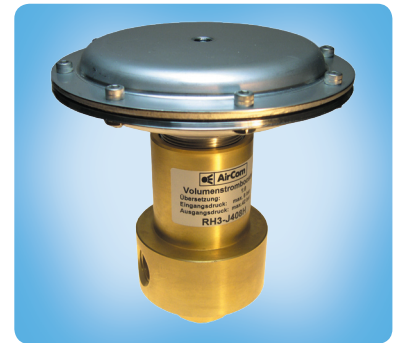
Material

Body: brass, optionally stainless steel Elastomer: FKM
Inner valve: PTFE, brass or optionally stainless steel



Dimensions			K _v	Flow	Signal	Pressure	Transmission	Order
A	B	C	value	rate	pressure	range	ratio	number
mm	mm	mm	(m ³ /h)	m ³ /h*1	l/min*1	max. bar	signal : outlet	

High pressure booster							supply pressure max. 260 bar, non-relieving, without constant bleed, connection thread 1/2" NPT		RH3-J
76	170	45	1.7	420	7000	21	3... 42	1 : 2	RH3-J402
						17	5... 70	1 : 4	RH3-J404
						5	3... 42	1 : 8	RH3-J408
						5	5... 70	1 : 13	RH3-J413
						5	10... 104	1 : 19	RH3-J419



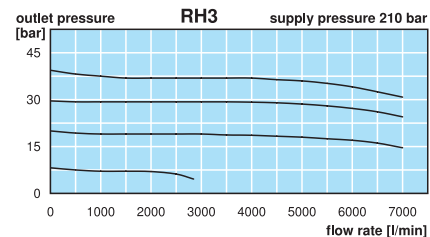
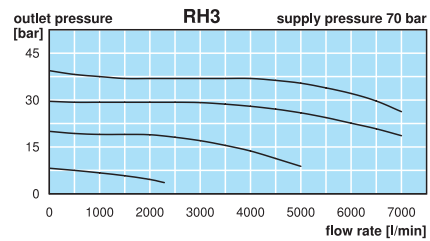
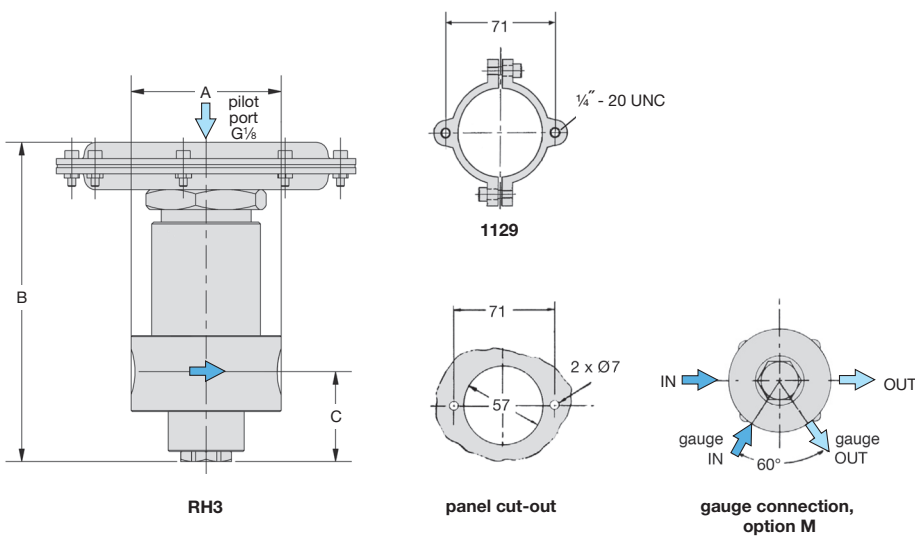
RH3-J

Special options, add the appropriate letter

3/4" NPT	connection thread							RH3-J6 . .
SST, 310 bar	body made of stainless steel 316							RH3-J . . .S1
gauge port	1/4" NPT for inlet and outlet							RH3-J . . .M
brass gauge	for brass body,	on the input side	HM	output side				RH3-J . . .MGM
SST gauge	for stainless steel body,	on the input side	H	output side				RH3-J . . .MG

Accessories, enclosed

set of brackets for panel mounting 1129



*1 at 210 bar supply pressure and 40 bar outlet pressure

Gauges: see chapter for measuring devices

PDF CAD
www.aircom.net

Order example:
RH3-J402